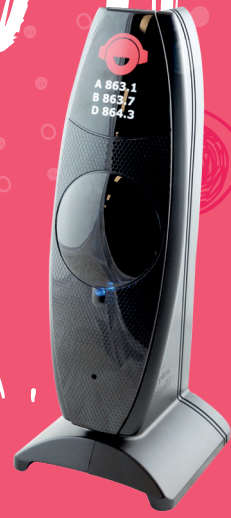




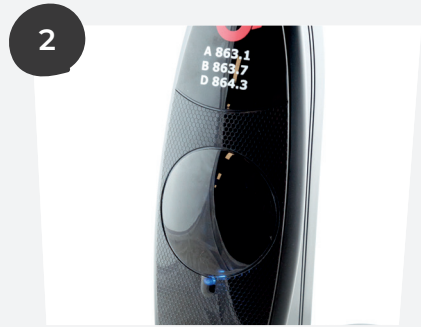
How it works



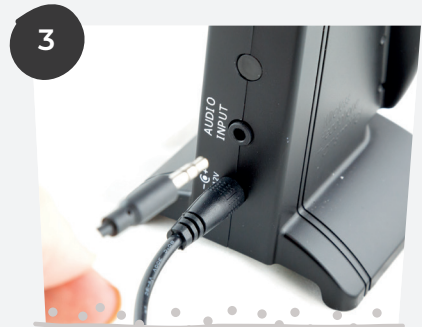
Setting up your Donkey Transmitter



Step one
Plug the Donkey into the mains to power the transmitter.



Step two
When the Donkey is plugged in LED Lights will display on the front.



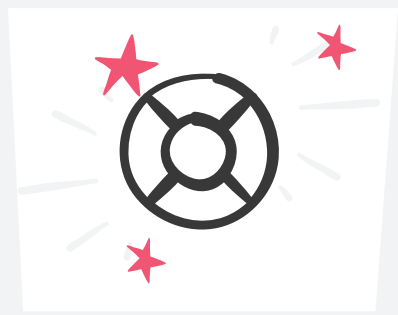
Step three
Connect to an audio source using the cables provided.



Step four
Select a channel to the transmitter.



Step five
Blue LED lights will display when audio is playing on music device to show transmission.



Troubleshooting
Check out the back of this sheet for tips on solving problems that you may run into.



a

a

LED light / equaliser

Indicates when power source is connected and illuminates according to sound.



b

b

Channel selector

Indicates what channel you're transmitting to.
Channels display: A. Red / B. Green / C. Blue

c

Audio input

Connect to audio device using cable provided.

d

DC input

Input for power adaptor to charge.

Troubleshooting

No Audio?

- Check your music playing device is working, connected correctly, playing music with volume turned up full.
- Try a different device and audio cable.
- Ensure receivers / headphones are switched on, connected to correct channel and have volume up.

No Power?

- Check the transmitter is fully charged / plugged in correctly and switched on.

Signal cuts out, interference or reduced range?

- Ensure there is no interference caused by other wireless equipment in the vicinity.
- If using 2 or more transmitters simultaneously make sure each is on different channels (frequencies). You cannot use 2 transmitters on the same channel in the same place. They will cancel each other out, resulting in little or no signal.
- Make sure the transmitter is in range.



hello@silentdiscoking.com • silentdiscoking.com • @silentdiscoking



Something not working? Visit silentdiscoking.com/help or call our 24/7 support line 0207 0603 653